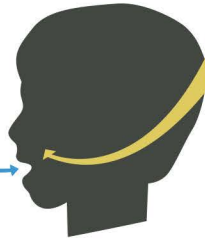
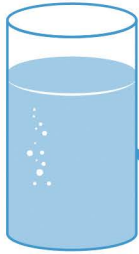


HOW FLUORIDE WORKS

FLUORIDE IN DRINKING WATER



IS TAKEN IN BY
TEETH
STILL DEVELOPING
BELOW THE GUMS



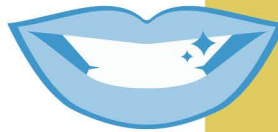
TO HELP CREATE A
STRONG SURFACE

PROTECTING THE
TEETH FROM CAVITIES

IN CHILDREN AND ADULTS

TEETH ARE BATHED

IN FLUORIDE WHEN DRINKING WATER



GIVING TEETH THE
FLUORIDE THEY NEED
ALL DAY LONG

ACID PRODUCED BY BACTERIA
IN THE MOUTH CAN CREATE
HOLES ON THE SURFACE
OF THE TEETH



FLUORIDE HELPS PROTECT
& REBUILD THIS SURFACE

PREVENTING
ABOUT 25% OF CAVITIES

Build a better foundation for healthy teeth and keep your teeth stronger, longer. Fluoride in water. 70 years and going strong. At a faucet near you. Visit www.CDC.gov/Fluoridation for more information.

