

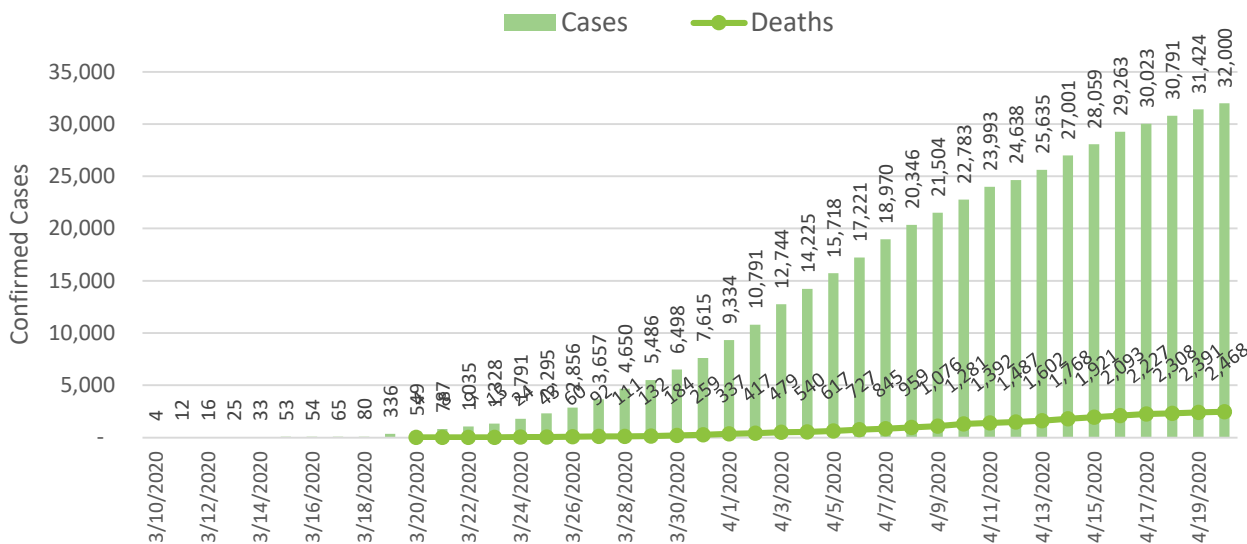


# MMDHD COVID-19 Response

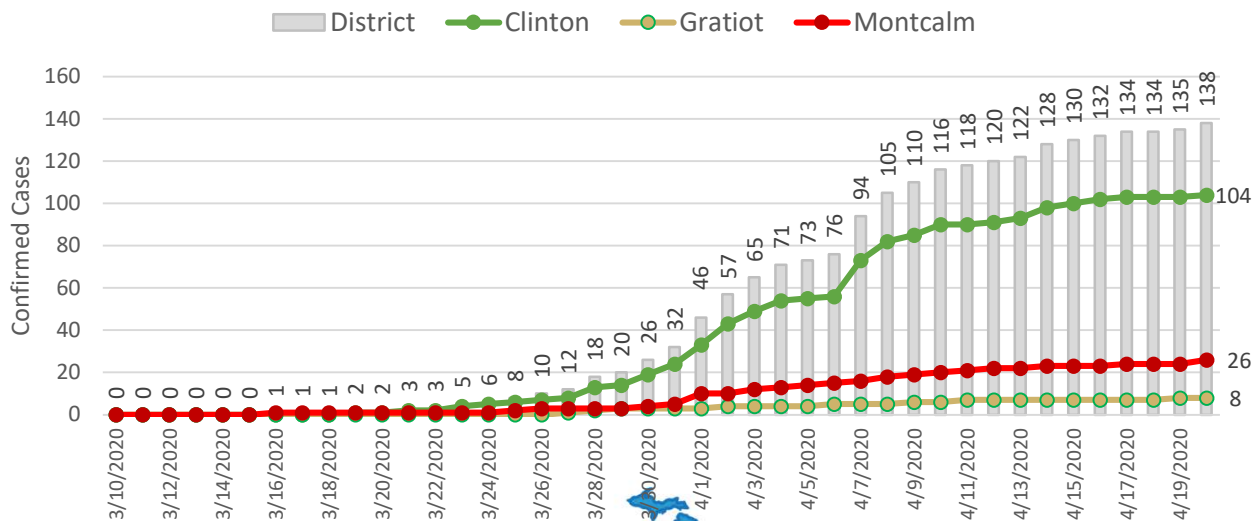
## Board of Health

### April 22, 2020

## Michigan Cumulative COVID-19 Confirmed Cases and Deaths

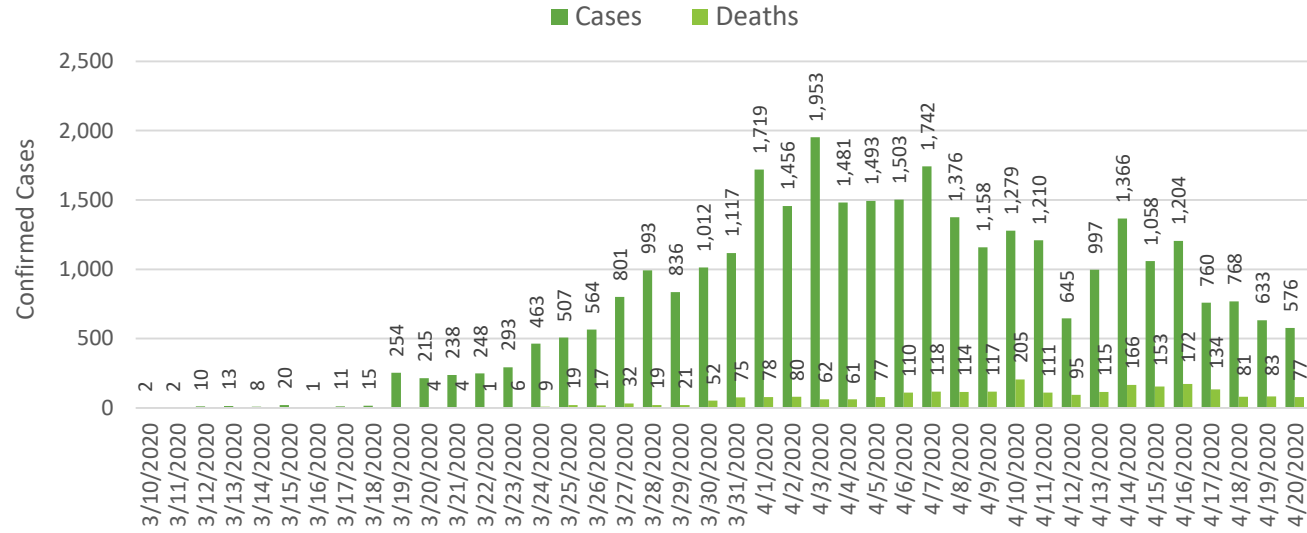


## MMDHD Cumulative COVID-19 Confirmed Cases

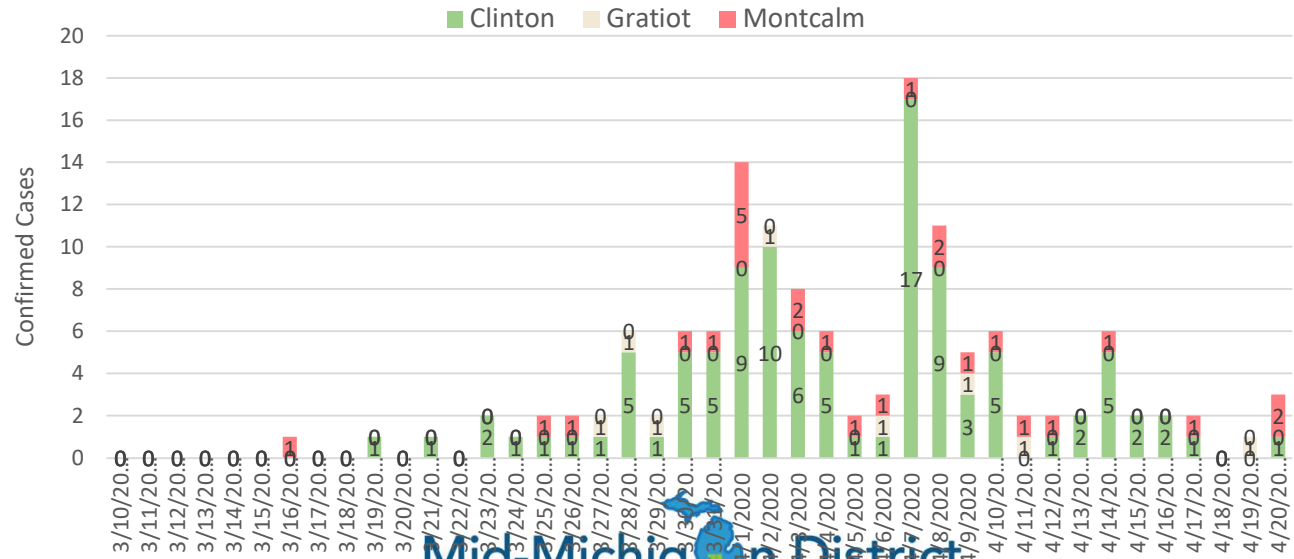


Mid-Michigan District  
HEALTH DEPARTMENT  
CLINTON • GRATIOT • MONTCALM

## Michigan New Daily COVID-19 Cases



## MMDHD New Daily COVID-19 Cases



Mid-Michigan District  
HEALTH DEPARTMENT  
CLINTON • GRATIOT • MONTCALM

# Contact Tracing

## Total: 1,191

April 21, 2020	MI	Clinton	Gratiot	Montcalm
Ruled Not a Case (assume testing)	21,599	345	227	115
Actual Cases (tested positive)	32,733	105	8	26
Monitoring (Quarantine)		154	83	89
Suspects & Probables (testing in progress)	4,077	18	8	13
<b>Total</b>		622	326	243

## How Bad Is It?

Location	Rate per 10,000
Detroit	118
Michigan Average	32
Dewitt & Township	27
MMDHD Average	7.6

COVID-19 Density  
Map  
As of: 4/20/20 3:30 pm

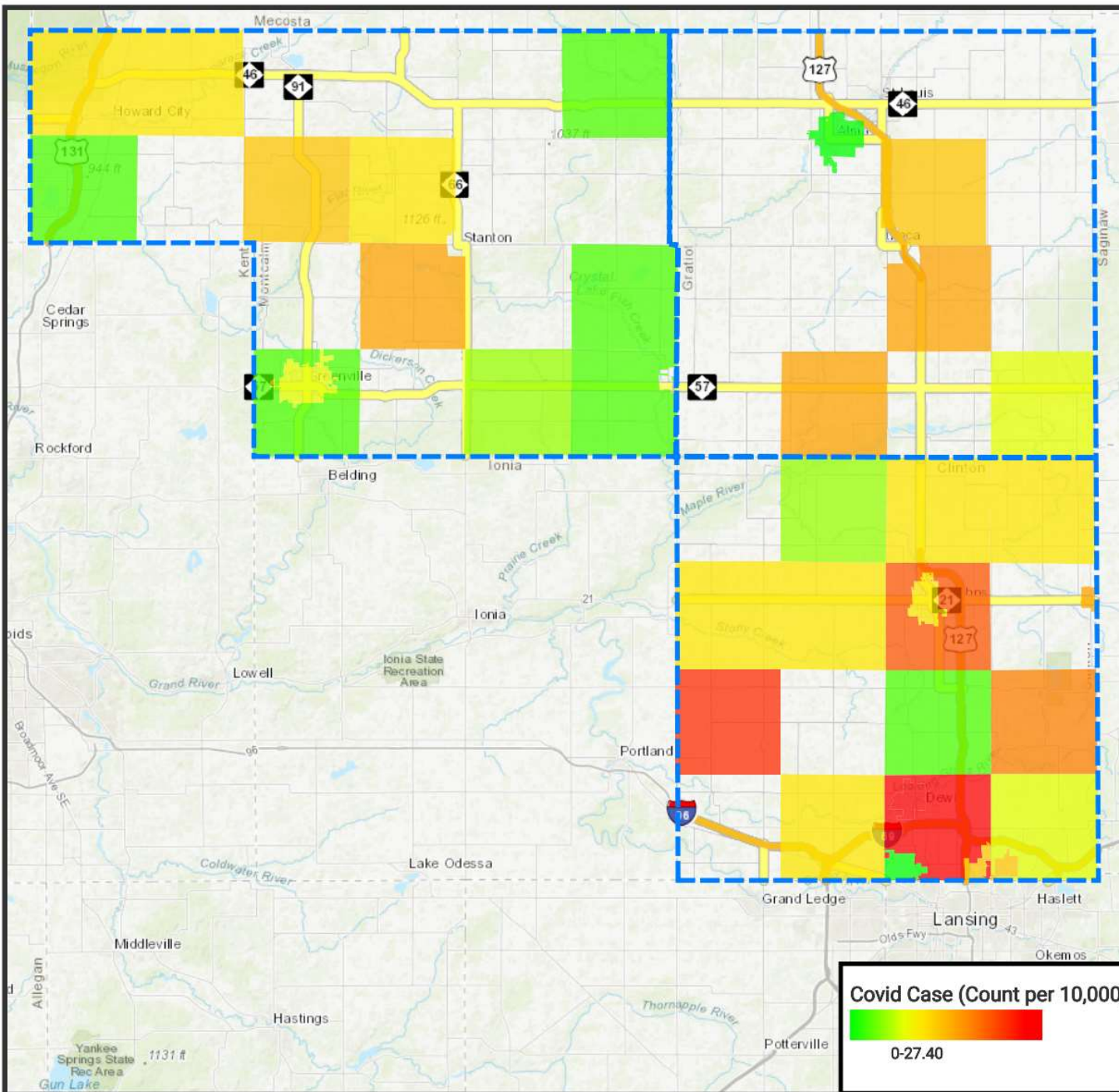
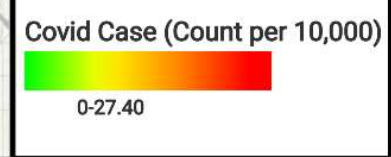


Map Publication:  
04/20/2020 3:43 PM



powered by  
**FetchGIS**

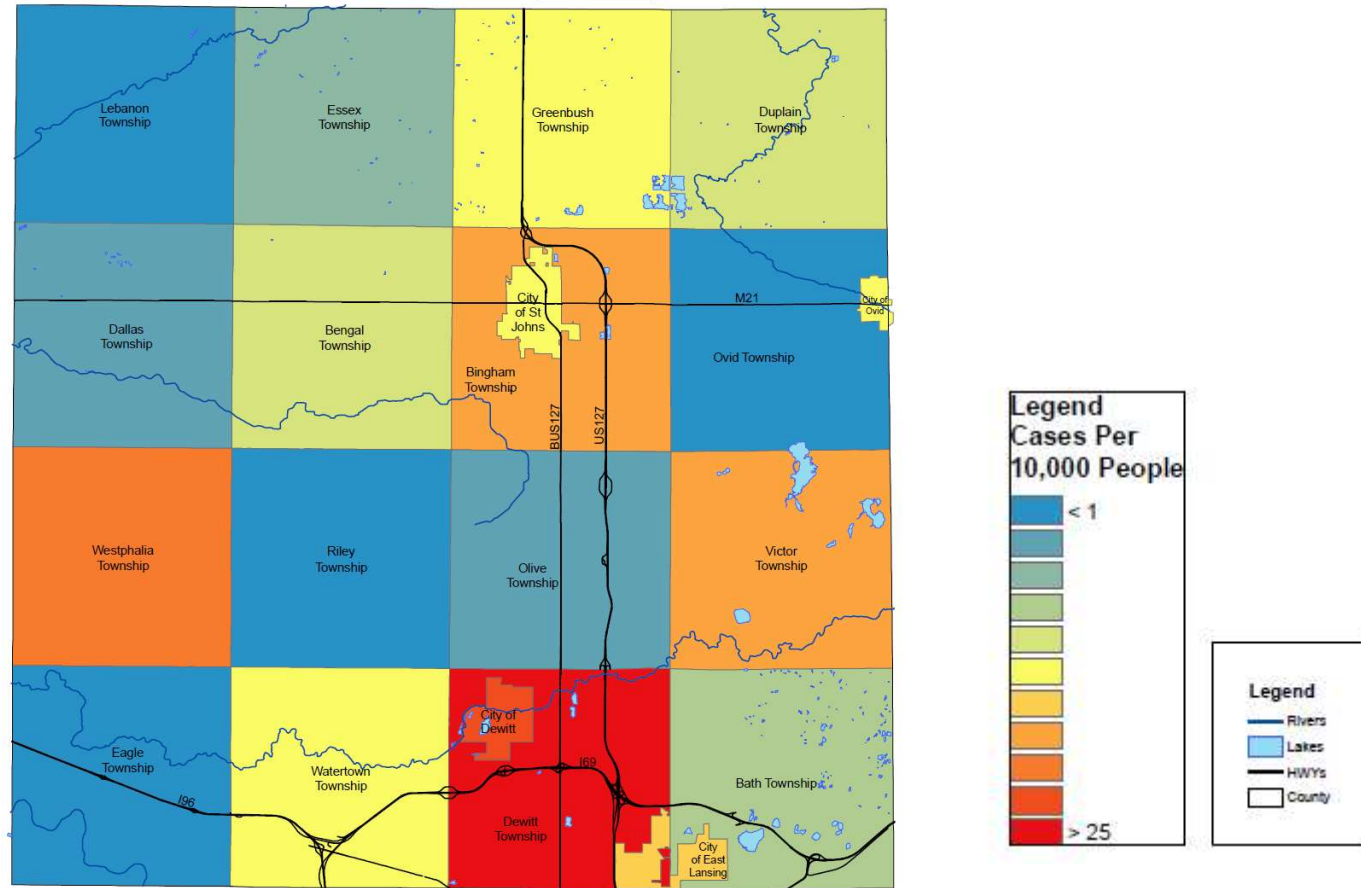
**Disclaimer:** This map does not represent a survey or legal document and is provided on an "as is" basis. Mid Michigan District Health Department expresses no warranty for the information displayed on this map document.



# Better Maps-Dewitt is a Hot Spot

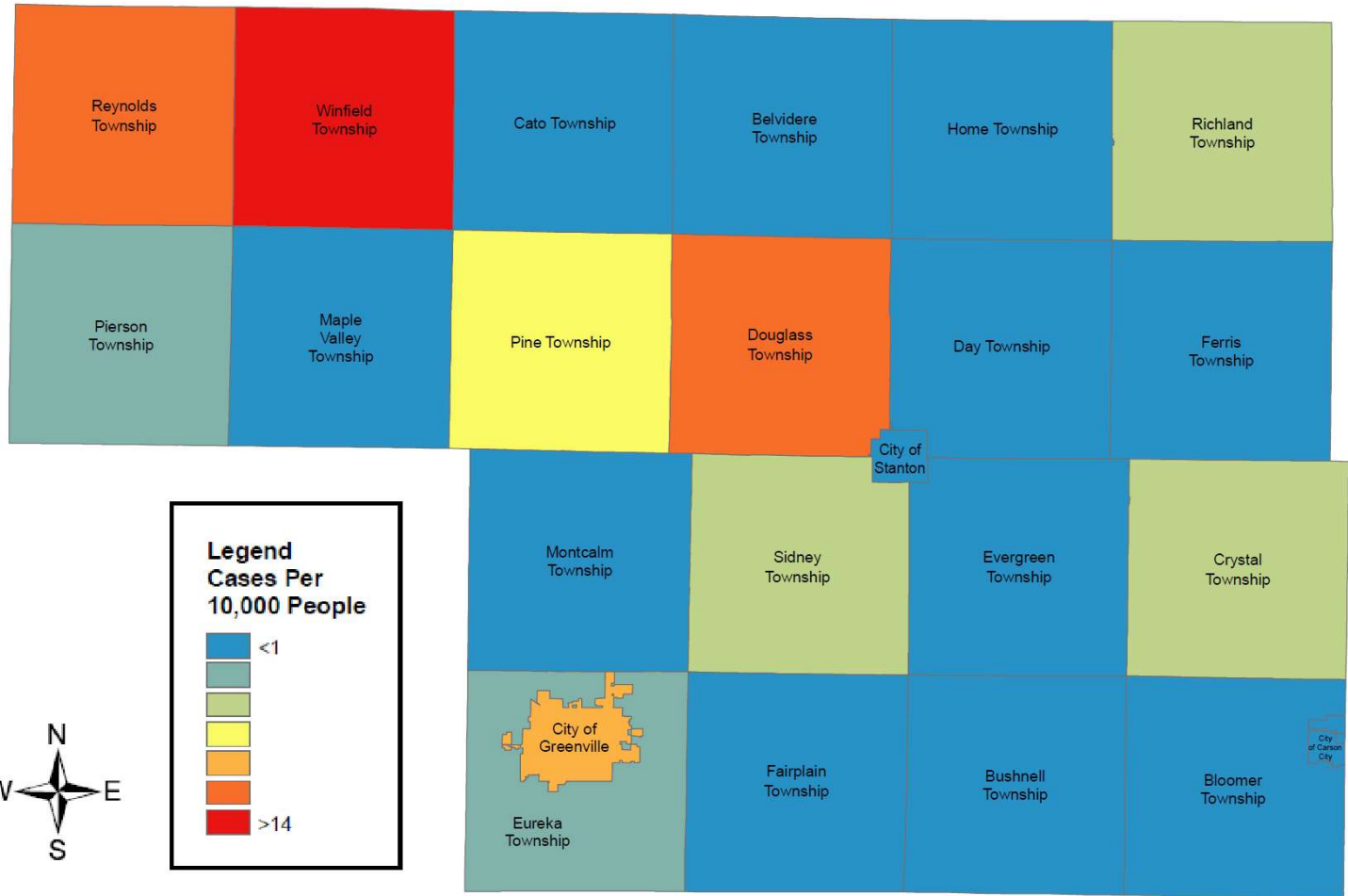
## CLINTON COUNTY

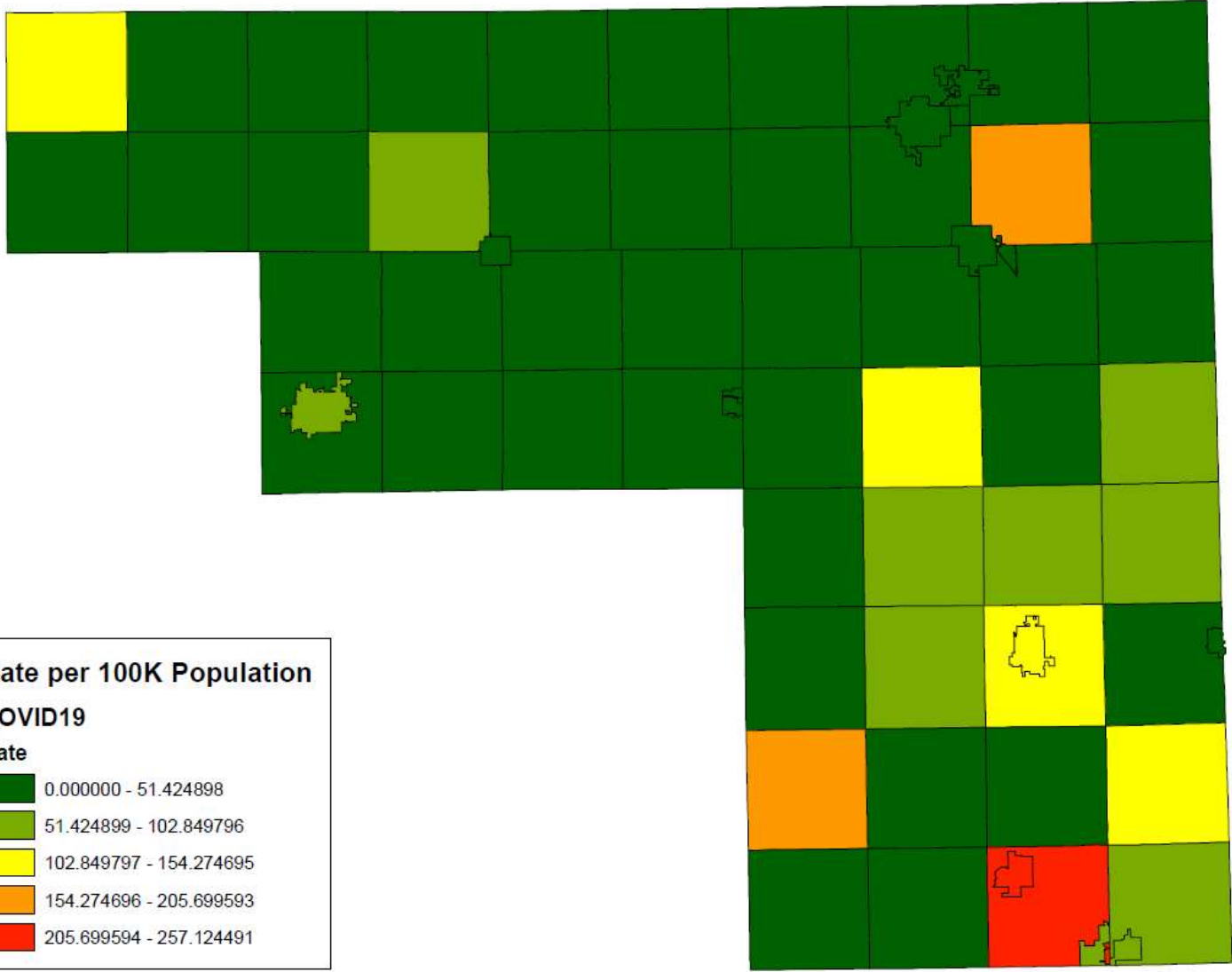
MMDHD COVID-19 Case Rates per County and Township as of 4-13-20  
COVID-19 Case Count Source: Mid-Michigan Health Department



# MONTCALM COUNTY

MMDHD COVID-19 Case Rates per County and Township as of 4-13-20  
 COVID-19 Case Count Source: Mid-Michigan Health Department









# MidMichigan Health Subsidiary COVID-19 Dashboard

Positive Patients currently Hospitalized					
MidMichigan Medical Center - Alpena	MidMichigan Medical Center - Clare	MidMichigan Medical Center - Gladwin	MidMichigan Medical Center - Gratiot	MidMichigan Medical Center - Midland	MidMichigan Medical Center - West Branch
1	0	0	1	4	0
Pending Patients currently Hospitalized					
MidMichigan Medical Center - Alpena	MidMichigan Medical Center - Clare	MidMichigan Medical Center - Gladwin	MidMichigan Medical Center - Gratiot	MidMichigan Medical Center - Midland	MidMichigan Medical Center - West Branch
3	2	0	0	6	3
Patients Currently on Ventilator					
MidMichigan Medical Center - Alpena	MidMichigan Medical Center - Clare	MidMichigan Medical Center - Gladwin	MidMichigan Medical Center - Gratiot	MidMichigan Medical Center - Midland	MidMichigan Medical Center - West Branch
0	0	0	1	5	0
COVID Patients Currently on Ventilator					
MidMichigan Medical Center - Alpena	MidMichigan Medical Center - Clare	MidMichigan Medical Center - Gladwin	MidMichigan Medical Center - Gratiot	MidMichigan Medical Center - Midland	MidMichigan Medical Center - West Branch
0	0	0	1	0	0
Census					
MidMichigan Medical Center - Alpena	MidMichigan Medical Center - Clare	MidMichigan Medical Center - Gladwin	MidMichigan Medical Center - Gratiot	MidMichigan Medical Center - Midland	MidMichigan Medical Center - West Branch
38 / 139 (27%)	7 / 49 (14%)	3 / 25 (12%)	65 / 107 (61%)	153 / 324 (47%)	16 / 88 (18%)

Data Last Refreshed: 4/20/2020 7:21:21 AM

# COVID-19 Spectrum Health Dashboard

Facility Cases (ED, Obs, Inpatient)				Recoveries* (IP& Obs)		Virtual		
	Total	Positive	Pending	Prev. Day:	3		Previous 24 hours	Cumulative
	93	56	37	Cumulative:	99	Chatbot - Number of Users	91	14,508
<b>Team Members</b>								
	Surveys Taken	Survey Screened "Not OK"	Employees Positive**					
Prev. to Current Day:	5,209	26	4					
Cumulative:	94,364	2,682	51					
<b>COVID-19 SHWM Lab Testing</b>								
	Total	Pending	Positive	Resulted % Positive	Negative			
Prev. Day to Current:	556	156	63	15.8%	337			
Cumulative:	7,215	166	758	10.8%	6,291			

# Main Objectives

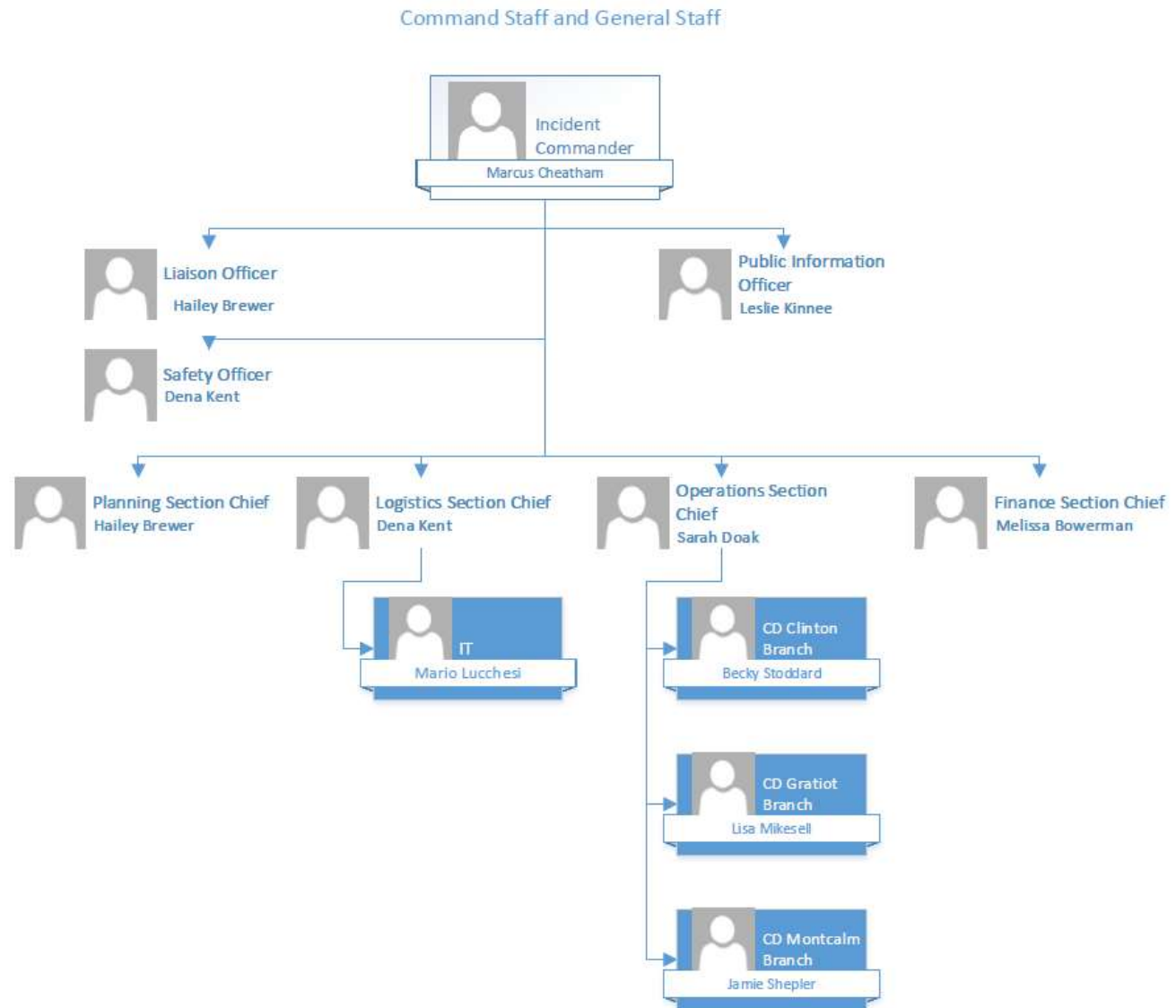
- Employee Safety
  - Working from home
  - Required policies and procedures in place
  - Required technology operational
- Discontinue non-essential services
- Continue essential services electronically
- Slow spread of COVID
  - Contact tracing
  - Engage with government and community partners
  - Community education

## Extraordinary State Actions

- Michigan's Local Public Health Accreditation Program paused
- Minimum Program Requirements suspended
- Rules relaxed for programs like WIC so they can be telephonic.
- Delayed Food Service Licenses
- LHDs had already decided to take such actions regardless of State permission

# This is our new operational configuration

## Briefings daily



## Operations are being managed from any location in our new Office 365 Teams software

The screenshot shows a Microsoft Teams window titled "Incident Command Meeting03...". The document content is as follows:

Incident Command Meeting Minutes		
Date:	3/19/20	Location: Virtually
Scribe's Name:	Hailey Brewer	Event Name: COVID-19
Reason for Meeting/Call:	Daily 10am Incident Command Meeting.	
Command Position	Update	Does this info need to be added to MICIMS? Y/N
Incident Commander	Reminding staff that we need to keep pushing through and we might know someone that will be sick. Governor is allowing boards to have virtual meetings. Marcus will be working with the board to get it to be virtual. Law enforcement is asking for help from the LHD on testing options. Becky has 5 kits in Clinton, Jamie has 1 kit, Lisa has 2 kits. Will keep a couple back for the jails. Need to send out a blast fax of the new memo that went out. Leslie, Dena, Sarah, and Cindy will work together to get the memo out today.	
Communications	Marcus will be talking to the Lansing State Journal today. Office closure signs were posted and will be going to the website today. Draft press release for Clinton County will be going out today. Blast fax will be going out to providers today. Gratiot and Montcalm doors will be locked starting at 12:30pm. Leslie will send out a new sign. Planning on a press release for each county (first case) and then only updates as needed.	
Planning	PPE arrived yesterday. We need to decide how much is enough for our staff and distribute out extras to staff	Y
Operations	Sarah will be sending out some information on N95s and use. Clinton County case- Admitted to hospital late last night. 82 yo. Husband is symptomatic and we are working on contacting him. 18 hospital employees are <u>exposed</u> and the hospital is working with their employees. Laura Grosskopf is here and working on getting a schedule up. Bonnie and Andrea are on notice if needed. Medical students have been very helpful in answering questions for the CD nurses. Jen is coordinating with the med students to get a list of who is available.	
Finance/HR	Memo will be going out to staff about general tips to staff and an updated work from home policy.	
EH	Reminder postcards are going to non-community water suppliers. Team meeting with EH later this week.	
Other items		



## Contact Tracing and Public Information

About 60 calls a day to the call centers plus unknown direct calls

- Two virtual call centers
  - CD nurse call center
  - Public information call center
- Calls come into main number
- Callers select COVID information
- Calls routed to the correct call center
- Staff can receive calls at home

# Expansion Plans

- Likely we will be pushed to seek out probable cases
- We have 3 more trained people
- Three temporary nurses ready
- Just-in-time training for non-CD staff
  - Model provided by regional epidemiologist
- Medical student volunteers
- State volunteers

# Communication and Education

- Boards of Commissioners (2)
- Department Heads (3)
- City of Greenville (2)
- Emergency Operations
  - Weekly
- Healthcare Coalitions (2)
- ISDs (1 and others canceled)
- Radio (2)
- Television (WOOD)
- Newspapers (including LSJ)
- Regional Collaboratives (3)
- Mental Health Prevention Providers
- Offices on Aging (3)
- Hospitals (2)
- Fax/Email Constant Contact
  - Providers
  - Schools
  - Healthcare
  - Food Service
- Mid-Central Webinars
  - Colleges and Universities
  - Healthcare
- Videos (3)
- Social media: Facebook, Twitter, Instagram

	Received	Distributed	On Hand
N95 Masks	2156	699	1457
Surgical Masks	4050	875	3175
Surgical Gowns	718	400	318
Eye Protection	282	28	254

## Inventory of Personal Protective Equipment



- Stockpile left over from H1N1
- CDC rules expired stock OK to use in this emergency
- March 19 shipment from Strategic National Stockpile
- 25 percent to LHDs to share with regional partners

## Regional Health Care Coalitions

- Regular planning calls
- Includes hospital emergency managers and local public health
- Sharing medical surge plans and testing capabilities
- Assistance to long term care, adult foster care especially testing
- MMDHD distributed personal protective equipment to AFCs



## “Enforcement” of Emergency Order 2020-21

- Law enforcement in all three counties and Greenville took enforcement seriously
- Health Department also visited several sites of complaints
- Health Department issued its own EO 2020-2 to clarify need to screen employees
- Montcalm counted enforcement activities through Central Dispatch and reported nearly 100
- Not aware of any actual tickets or warning letters.

## Testing in Group Living Facilities

- Outbreaks can occur in Long Term Cares, Adult Foster Cares, Jails, etc.
- MDHHS wants to ensure such locations have access to PPE and COVID-19 testing
- LHDs asked to survey Facilities to determine needs and help them obtain or order what they need
- MMDHD had already done AFCs and is backing up to do the others



# Plans for Shelter

- Local jurisdiction asked to have the ability to quarantine if needed
- We chose to create a shelter for COVID-related issues
- People who can't go home for any reason
- Mild illness—must be able to care for self

- Contract is per room per day
- Food and laundry included
- CHWs to monitor people telephonically



# National Coronavirus Response

A ROAD MAP TO REOPENING

**Scott Gottlieb, MD**

**Caitlin Rivers, PhD, MPH**

**Mark B. McClellan, MD, PhD**

**Lauren Silvis, JD**

**Crystal Watson, DrPh, MPH**

MARCH 28, 2020

A M E R I C A N   E N T E R P R I S E   I N S T I T U T E



## B. Probable Case

- A. A person with fever (over 38 degrees Celsius) and/or onset of (or exacerbation of chronic) cough **AND** any of the following within 14 days prior to onset of illness:
- Travel to an impacted area **or**
  - Close contact with a confirmed or probable case of COVID-19 **or**
  - Close contact with a person with acute respiratory illness who has been to an impacted area

**AND** In whom laboratory diagnosis of COVID-19 is not available, inconclusive, or negative (if specimen quality or timing is suspect) (see footnote 5,6,7)

**OR**

- B. A person with fever (over 38 degrees Celsius) and/or onset of (or exacerbation of chronic) cough **AND** in whom laboratory diagnosis of COVID-19 is inconclusive (see footnotes 6,7)


**Laboratory-confirmed and probable COVID-19 deaths in among New York City residents, count (% of cases with demographic data reporting complete)**

<b>Characteristic</b>	<b>Confirmed</b>	<b>Probable</b>
<b>Age Group</b>		
- 0 to 17	3 (0%)	0 (0%)
- 18 to 44	353 (4.5%)	69 (3.0%)
- 45 to 64	1788 (22.7%)	498 (21.7%)
- 65 to 74	1962 (24.9%)	539 (23.5%)
- 75 and over	3783 (47.9%)	1185 (51.7%)
- Unknown	1 (0%)	0 (0%)
<b>Sex</b>		
- Female	3033 (38.4%)	973 (42.5%)
- Male	4843 (61.4%)	1318 (57.5%)
- Unknown	14 (0.2%)	0 (0%)
<b>Borough of Residence</b>		
- Bronx	1802 (22.8%)	443 (19.3%)
- Brooklyn	2293 (29.1%)	764 (33.3%)
- Manhattan	1004 (12.7%)	331 (14.4%)
- Queens	2402 (30.4%)	672 (29.3%)
- Staten Island	385 (4.9%)	69 (3.0%)
- Unknown	4 (0.1%)	12 (0.5%)
<b>Report complete</b>	7890 (100%)	2291 (53.2%)
<b>Report incomplete</b>	0 (0%)	2018 (46.8%)
<b>Total</b>	7890	4309



## Finance

- \$30,000 from the CDC
- \$125,000 from FEMA with a little more on the way.
- Applying for FEMA dollars for sheltering
- Applying for FEMA dollars to cover over-time and other direct COVID expenditures
- Evaluating whether we can apply for CARES Act
- Attempting to estimate lost revenue
  - Environmental Health fees
  - Billing Medicaid



**Call MMDHD:  
989-831-5237**

**Get the latest at:  
MMDHD.org**

## Emerging Issues

- Testing is not the answer for first responders
  - It takes time for the disease to develop so that a test will detect positives
- MMDHD is not able to notify you first of all cases and deaths
  - Health care providers and others may release that information before we know
- Some LHDs desire to make stricter orders than the State
  - e.g. campgrounds that are not a residence
  - We seek Board of Health direction on this